



Ellab Continuous Monitoring Solutions

Keep your assets safe by reliably monitoring your biopharmaceutical laboratories, storage areas, and facilities



Regulatory Compliance

Data Integrity

Alerts & Notifications

Scalable Solutions

Remote & On-Site Support

Global Expertise with Local Reach



LN2 Tanks
Ovens
Relative Humidity
Cleanrooms
CO₂
4-20mA
Digital Output
0-10V
Fridges & Freezers
Differential pressure
Temperature
Cold Rooms
Continuous Monitoring
Door switches
Stability Chambers
Labs & Research facilities
Chambers
Blood Banks
Manufacturing
Warehouse & Storage
Air Flow Incubators

Ellab's Continuous Monitoring Solutions Provide Confidence Across All Applications

Experience a solid, reliable, and comprehensive real-time monitoring solution that addresses the concerns that matter most to you. Achieve ultimate peace of mind with timesaving features, services, and ongoing support options tailored to meet your needs.

EMSuite software takes your continuous monitoring system to another level. Experience full data collection with custom reports, interactive graphs, tables, and plan views, audit trails, and ability to comply with industry standards and regulations such as FDA 21 CFR Part 11 and more.

Custom alarms are configured to alert users when your control parameters have been breached. Some alerts are sent directly (via mobile APP, SMS, or email) to those who need to react appropriately.

Document your response to alarms by using our action cards, which turns existing SOPs into fully traceable step-by-step actions to keep your team engaged and responding efficiently.

Our TrackView Pro monitoring system safely transfers all your data through 2-way radio frequency communication or optional hardwired connection utilizing PoE for secure data transmission straight to software.

Keep Your Products and Operations Safe with Ellab



Protect valuable assets, comply with regulations, and optimize your facility



Whatever You Need

- Custom alerts, reports, and a variety of sensors to cover any facility.
- Overviews and interactive graphs, tables, and map views for detailed analysis.
- Prioritize data integrity with 2-way communication.



Whenever You Need It

- Remotely view your system and receive alerts through mobile APP, SMS, and email notifications to ensure that alarms reach the necessary users.
- Generate custom report templates and schedule them to run automatically.



Wherever You Are

- Access data and settings from anywhere in the world through the website and mobile app.
- Access the software through your smartphone, tablet, or local PC.

Regulatory Compliance & Custom Reports

Take advantage of fully customizable reports, providing easy access to relevant data so you can fully document your compliance and avoid unnecessary audit actions.

- Data can be easily retrieved for viewing, reporting, data analysis, and regulatory compliance.
- Generate advanced reports from our wide range of customizable modules to provide the data you need, when you need it.
- Quickly and easily view data trends to verify current and historical conditions.
- Protect your audit trail with a read-only system log that records a complete history of all actions and events.
- Optional upgrade for FDA 21 CFR Part 11 to support compliance with GxP, GMP, GLP, AABB, CAP, USDA, Annex 11 guidelines.
- Our validation documents are written to GAMP 5 standards with system life cycle documentation.

Data Integrity & System Security

Ensure your data is collected and stored securely by protecting it from network failures, loss, alteration, or misuse.

- Protect and corroborate your data with a 2-way communication handshake between each transmitter and EMSuite software using secure and reliable LoRa communication protocols.
- Secure HTTPS encryption and data communication from access points to the software.
- Ensure all required environmental data and mitigation actions are captured for complete documentation and compliance.
- Control user access to data and the reporting suite, and automatically log continuous data without room for human error.

Alarms & Notifications



Custom Parameters
to Reduce Alarm
Fatigue



Action Cards for
Step-by-Step
Instructions



Mobile App, Email,
SMS, Software &
Browser Notifications



Save Time with
Automatic Data
Capture

Scalable Solutions

Re-organize, move, and grow your continuous monitoring system with flexible reconfiguration as your sites and facilities change. Manage your team to improve and standardize your alarm response and plan effective actions.

- Additional hardware is added to the system within minutes and can be configured remotely.
- Easily relocate equipment within your facility.
- Adjust viewing privileges to ensure your team stays focused on what they need to see.
- Organize and grow your environmental monitoring system across multiple sites with local data capture, cloud-based solutions, and global system overviews
- Expand your system into new sites and locations.



System Support, Calibration, Validation

Ellab offers comprehensive remote and on-site services for reliable calibration, validation, and maintenance to support your ongoing monitoring needs.

Calibrations

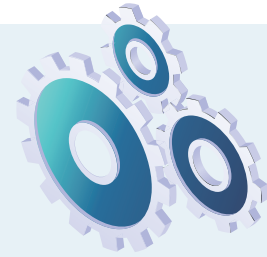
Schedule regular on-site calibrations from our experts and maintain your system's optimal accuracy, or choose to freely perform independent calibrations. Avoid the cost and hassle of shipping your equipment by letting us come to you, or make use of our hot-swappable sensor exchange program to prevent unnecessary downtime.

Initial setup and system configuration

Remote and on-site support to get the system up and running and integrated seamlessly into your existing infrastructure.

Validation

Complete manufacturer IQ/OQ documentation available for both software and hardware, and optional on-site validation.



Reliable Partners

With Ellab you have a competent partner you can rely on for all your continuous monitoring requirements. We provide expert knowledge and ongoing support so that you will always have instant access to expert knowledge and experience.

- Work with us to ensure strategic and tactical use of your resources and operations.
- We share strong core values such as quality, efficiency, and safety, so you know you can depend on us.
- A partner with comprehensive metrological knowledge and broad capabilities. Ellab provides temperature mapping, validation, monitoring, and calibration solutions and services, as well as training and GMP consulting.



The ideal continuous monitoring system tailored to suit your needs.

Featuring a complete solution that provides both hardware and software for accurate data, automated reports, and custom alerts that keep your products safe.

If your chosen parameters are ever breached, the system alerts you immediately - giving your team the time they need to correct the error.





Versatile
Temperature,
Humidity,
Door Switches,
Differential Pressure
& CO₂



**Total Security, Data
Privacy & Integrity**



**On premise &
SaaS with FDA
Approval**



**2 Way Radio
Communication**



Personalised System
Scalable Multi-sites, Dashboards,
Alarming, Interactive Map, Graph
Views/Sensor Lists & more



**Expandable
system; up to 32
transmitters**



**2X SMART probe
Connections for each
transmitter type**



**2 Way Radio
Connection**



**+ Ethernet connection
for PoE version**







Validation & Monitoring
Solutions

Global expertise with local reach

ELLAB A/S

T: +45 4452 0500

E: contact@ellab.com

Ellab has been your validation and monitoring partner since 1949, offering both validation equipment and validation services as well as environmental wireless monitoring solutions.

We serve both small and large companies within the Life Science and Food industries and have solutions for almost all applications such as sterilization, freeze drying, environmental chamber testing, depyrogenation, warehouse mapping, pasteurization, controlled temperature units (CTU) and many more.

Ellab develops unique and innovative solutions based on input from close interactions and dialogues with our customers. Our goal is to help our customers overcome challenges and increase their productivity by providing reliable and efficient solutions.

Ellab also offers complete turn-key or supplemental rental solutions, equipment qualification and validation services and our specialized training courses within Ellab Academy.

Ellab has a long tradition and dedication for delivering the highest performance and quality in our industry. Our user friendly and flexible validation and monitoring solutions are recognized and used by thousands of customers worldwide.

Ellab A/S in Denmark is ISO 9001, ISO 14001 & ATEX IEC 80079-34 certified. Ellab A/S Calibration facilities are accredited according to ISO 17025 by DANAK under registration no. 520 and our affiliates in UK, Germany and Italy also carry the ISO 17025 accreditation executed by local authorities.

For further information all certificates for the Ellab Group can be found [here](#).



Follow Us

@ellabsolutions

/ellab

/c/EllabValidationMonitoringSolutions

ellab.com

ELLAB A/S

T: +45 4452 0500

E: contact@ellab.com



Intertek



Intertek