



TREKVIEW

TrekView is a breakthrough in cold chain risk mitigation. TrekView is an innovative, cost-effective cold chain monitoring product that ensures you know if your product has been exposed to unacceptable temperatures that could negatively affect its quality. Without violating the integrity of your product's shipping container, you can now measure, analyse, document and confirm that the temperature was within acceptable tolerances throughout transit and storage.

Now you can ship your temperature-sensitive product with complete confidence that someone will know if the product experiences any unacceptable temperature conditions after leaving your loading dock. Knowing how and when temperature excursions occur allows you to correct the problem, minimise the risks, and even assign accountability to the incident via the "Chain of Custody". TrekView allows you to have visibility throughout your entire supply chain to give you the information you need to make the right decision.

Product Features

- Smaller than a credit card
- Customisable settings, data access and monitoring methods
- RFID capability allows scanning through packaging or shipping containers
- Automatic email alerts of excursions
- Designed for wet, rugged applications
- NIST traceable units
- Captures data every 60 seconds

Benefits

- Lane mapping and risk mitigation
- Reduce packaging and shipping costs
- Use again and again for up to 3 years
- Reduces product damage and loss incurred during transportation or storage
- Protects fragile, sensitive, or calibrated goods in transit
- Provides indisputable evidence of mishandling
- Complete visibility from the first mile to the last



43852 - EXTERNAL USB



43853 - INTERNAL USB & STAINLESS STEEL PROBE

SPECIFICATIONS

Instrument:

Dimensions:	58mm ²
IP Rating:	IP 66 (43852 - TrekView External USB) IP67 (43853 - TrekView Internal USB)
Recording Options:	Multi-use*
Memory Capacity:	4000 logged data points / 16 million histogram data points
Downloadable Data:	Availale during transport / storage without stopping the recorder
Wireless Technology:	Semi-passive RFID
Packaging:	Food-grade packaging
Calibration:	Factory-calibrated

Indicator:

Temperature Range:	-30°C to +75°C
Temperature Accuracy:	±0.5°C across the entire measurement range
Threshold Settings:	8 configurable excursion thresholds

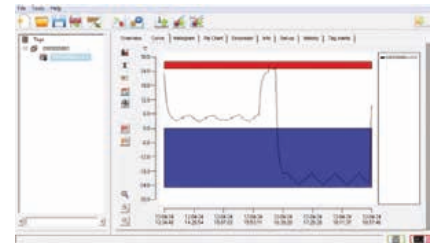
*TrekView can be reprogrammed up to 26 times

POWERFUL INFORMATION BUT EASY TO USE & TRAIN

Multiple data download methods and free software included for end-of-journey reporting temperature data can be downloaded using multiple methods: a desktop or handheld reader or direct connection to a computer. Once loaded onto the PC, the TrekView Report Software provides at-a-glance interpretation of when excursions have occurred and allows you to generate summary reports, manage tag programming, view tag status, and set alerts. The software is designed to provide a graphical display of a tag's recorded data and time-temperature profile in multiple formats: pie chart, curve, temperature distribution histogram, and tabular views of unit excursion data. The software gives users the option to drill in or get an overview of multiple tags.

Additional functionality:

- Automatically generate a PDF report of recorded tag data
- Validated and FDA 21 CFR Part 11 compliant reports
- Customise threshold levels, sampling rate and reporting options for individual tags or save the configuration for future use
- Overlay up to four tags for temperature mapping
- Get automatic email alerts, allowing you to respond quickly to risk



Disclaimer: The information contained herein is believed to be reliable. The IMC Group Ltd is not responsible for any incorrect or incomplete information on this datasheet and the information or product may be changed without notice. Customers should obtain and verify the latest relevant information before placing orders for IMC products.

Version 2